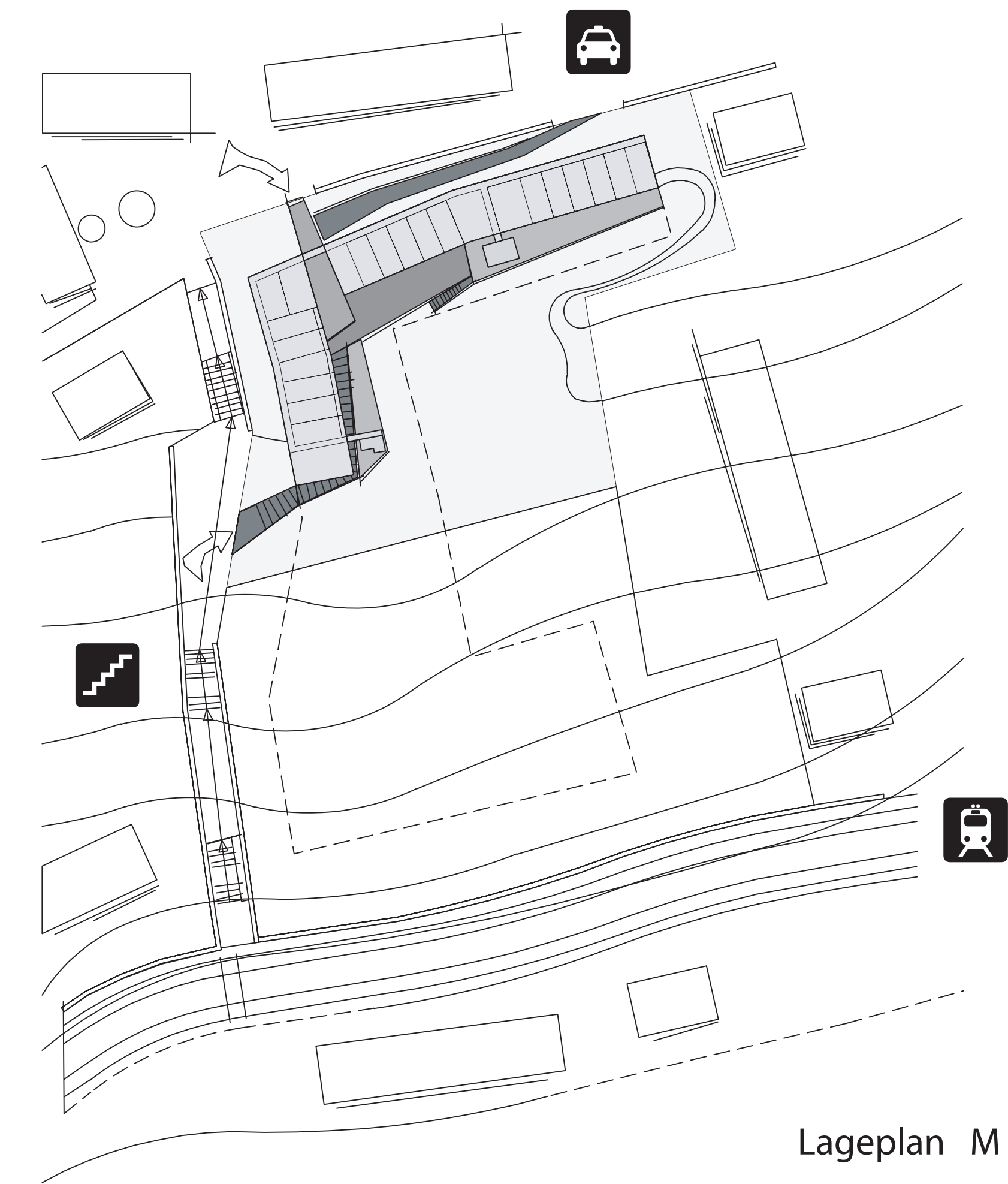
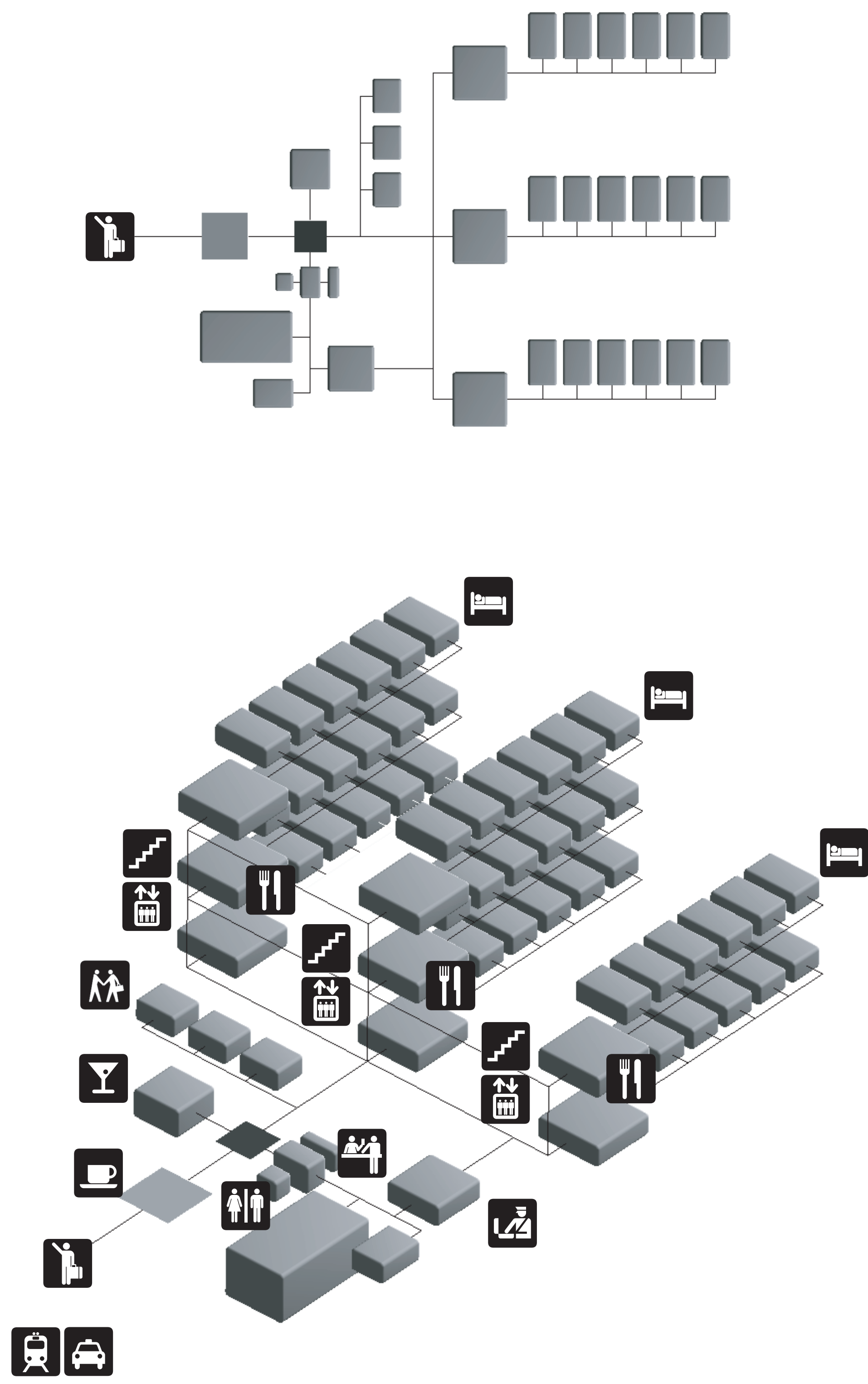
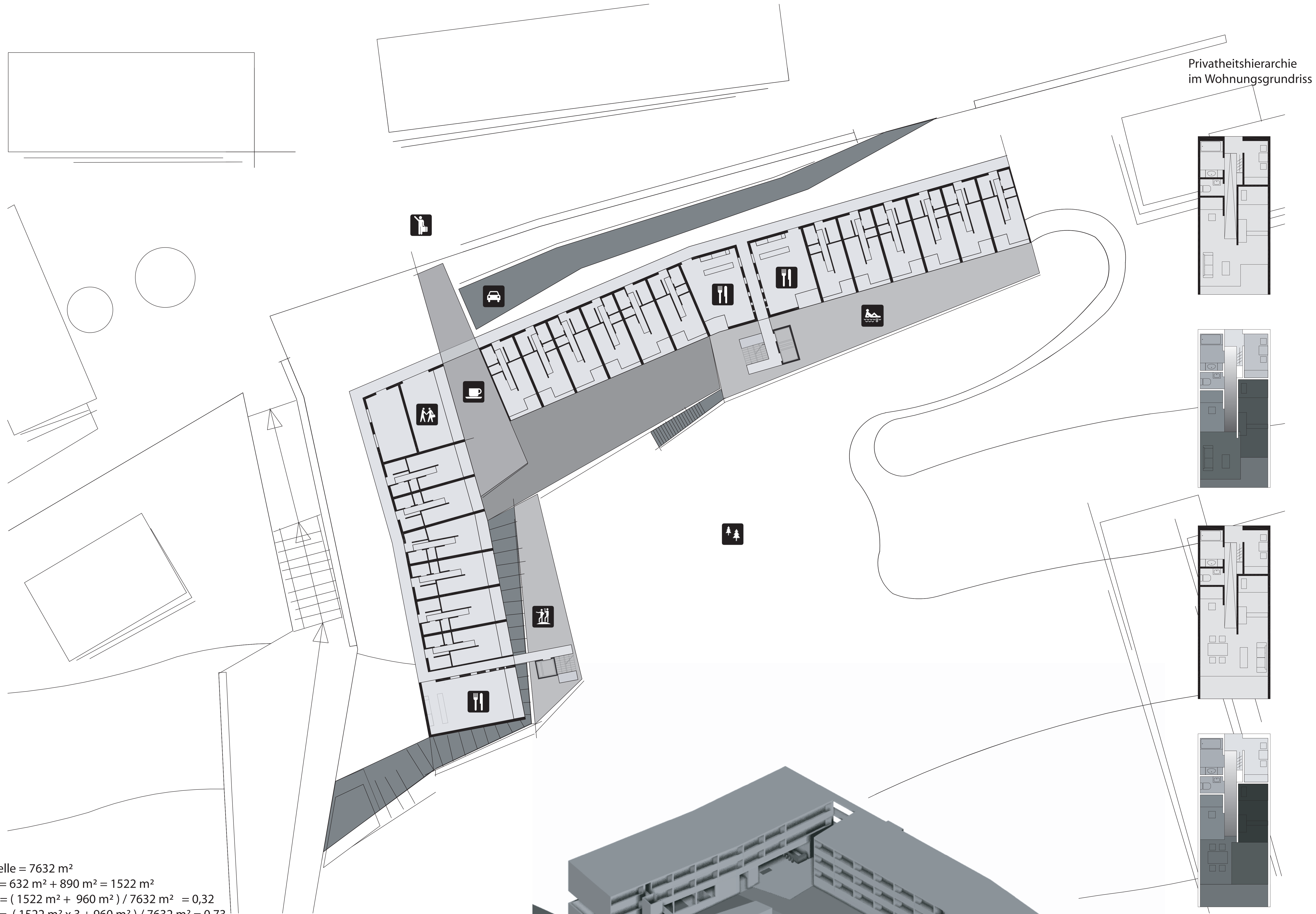
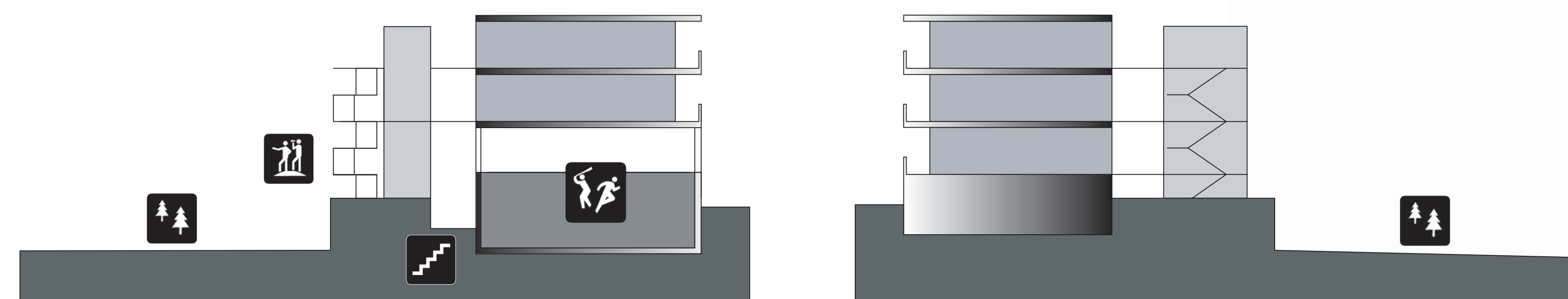


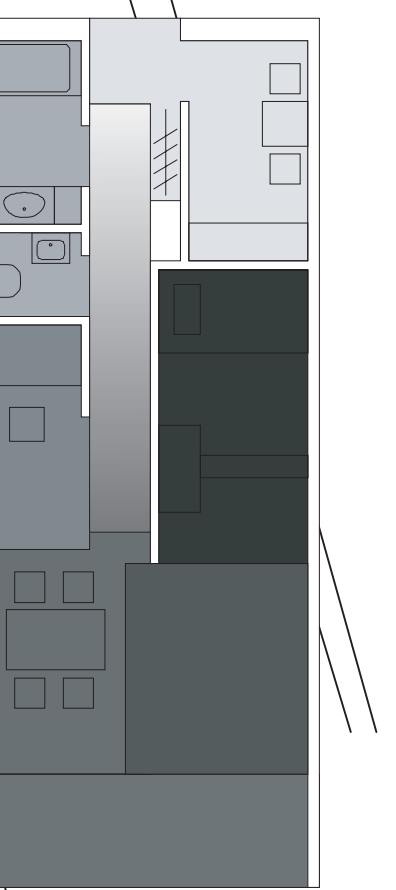
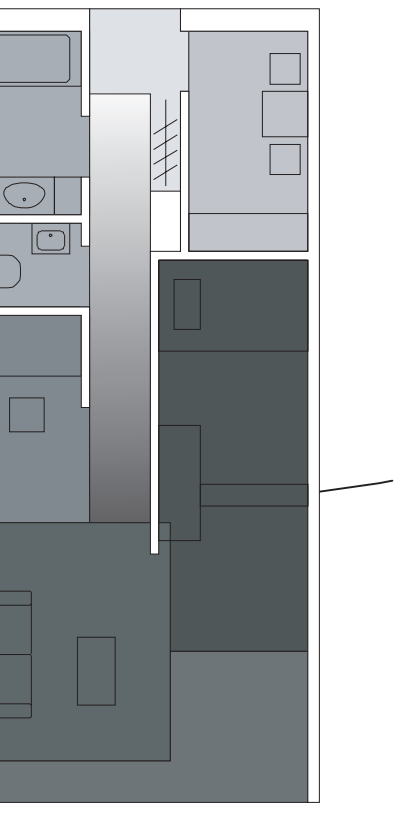
# THE WALL VS. LA ISLA BONITA



Parzelle = 7632 m<sup>2</sup>  
 BGF = 632 m<sup>2</sup> + 890 m<sup>2</sup> = 1522 m<sup>2</sup>  
 GRZ = ( 1522 m<sup>2</sup> + 960 m<sup>2</sup> ) / 7632 m<sup>2</sup> = 0,32  
 GFZ = ( 1522 m<sup>2</sup> x 3 + 960 m<sup>2</sup> ) / 7632 m<sup>2</sup> = 0,73



Privatheitshierarchie  
im Wohnungsgrundriss



grundrisse M 1:100

